

1. DESCRIPTION

Chlamydia spp. are a group of obligately intracellular bacteria that replicate inside of a cytoplasmic inclusion. They form spore-like structures that are called elementary bodies and are released from host cells and infect other cells. *Chlamydiae* are found in virtually all vertebrate and invertebrate animals. Currently nine pathogenic *Chlamydia spp.* are known that infect mammals.

Chlamydial diseases are typically not caused by toxins produced by the bacteria but by an ineffective cellular immune response that fails to eliminate the bacteria. These diseases are typically chronic in nature, and manifest themselves as granulomatous lesions on mucosal membranes. Scarring lesions may be the consequence of repeated infections. Specific *Chlamydia spp.* are typically associated with specific hosts and disease manifestations. Acute chlamydial diseases may present as respiratory diseases (*C. pneumoniae*, *C. psittaci*, *C. pecorum*, *C. suis*), enteritis, polyarthritis (*C. pecorum*), or urogenital infections (*C. trachomatis*, *C. suis*, *C. pecorum*).

VetPCR™ CHLA spp. Detection Kit is the direct detection of *Chlamydia spp.* on the basis of a genetic data base, so it can diagnose very fast and accurately. It can amplify only specific gene using the PCR (Polymerase Chain Reaction) method, and take only 3 hours for detection. Therefore, it is a very fast, accurate and reliable technique.

2. STORAGE

The components of VetPCR™ CHLA.spp Detection Kit should be stored at -20°C. Under this condition, the kit is stable until expiration date stated on the label.

3. CONTENTS

	Kit 48	Kit 96	
VetPCR™ CHLA.spp PCR Pre-mixture	48	96	tubes
DNase/RNase-free water	1	1	vial
CHLA.spp PCR Positive control	1	1	vial
CHLA.spp PCR Positive control Pre-mixture	4	8	tubes
Brig™ Molecular Weight marker	1	1	vial
Mineral Oil	1	1	vial
DNA purification kit (see step 6.1)	50	100	tests

4. SPECIMEN

0.5 ml whole blood in EDTA (purple top) tube, or 0,5 ml body fluid, CSF, or tissue.

5. ADDITIONAL REQUIRED MATERIALS

- Disposable gloves
- Pipettes
- Sterile pipette tip
- Vortex mixer
- Centrifuge for microcentrifuge tubes
- Thermal cycler
- Electrophoresis kit
- UV transilluminator

6. PROCEDURE

Please read through the entire procedure before starting.

6.1 DNA PREPARATION

Various manufacturers offer DNA isolation kits. Please carry out the DNA isolation according to the manufacturers instructions. The following standard DNA Purification kit is recommended.

Product	Catalog No.	Manufacturer
Bioingentech™ Genomic DNA Purification Kit (50 test)	230040(50)	Bioingentech Biotechnology Inc.
Bioingentech™ Genomic DNA Purification Kit (100 test)	230040(100)	Bioingentech Biotechnology Inc.

6.2 AMPLIFICATION

1.- Prepare appropriate PCR Premix tubes and one PCR Premix tube for Positive control. Label.

2.- Add 6µl of DNase/RNase-free water into the PCR Premix tube to total volume as 11µl.

3.- Add 2µl of template DNA into the PCR Premix tube to total volume as 13µl.

4.- Add 6µl of DNase/RNase-free water and 2µl of PCR Positive control into a PCR Positive control Premix tube for monitoring of amplification and easy interpretation.

5.- Add mineral oil (11µl). This step is necessary, even when using a thermal cycler that employs a top heating method.

6.- Perform PCR reaction of samples as the below process, using a PCR thermal cycler.

PCR cycle		Temp.	Time
30 Cycles	1 Cycle	Initial Denaturation	94°C 2 min.
		Denaturation	94°C 30 sec.
		Annealing	55°C 30 sec.
		Extension	72°C 30 sec.
1 Cycle		Final extension	72°C 5 min.

6.3 DETECTION OF AMPLIFIED PRODUCTS

1.- Prepare 1.5% agarose gel containing Ethidium bromide (Et-Br).

2.- Load 7µl of PCR product, 7µl of positive control and 2µl of Brig™ Molecular Weight marker on agarose gel without adding a loading-dye buffer and perform electrophoresis.

3.- Run electrophoresis by 100V (required about 30~40 minutes).

4.- Identify the result on ultra-violet (UV) transilluminator.

6.4 INTERPRETATION

- Expected PCR product size : 261 bp

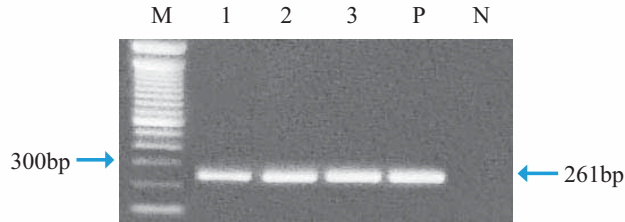


Fig1. Electrophoresis of PCR product by VetPCR™ CHLA.spp Detection Kit
 Lane M : Brig™ Molecular Weight Marker (Bioingentech Ltd.)
 Lane 1~3 : CHLA.spp Positive sample
 Lane P : Positive control
 Lane N : Negative control

7. NOTICE

- For research purpose only. Not for use in diagnostic procedures for clinical purposes. *For in Vitro Use Only.*
- Take care in handling of specimen to minimize risk of infection.
- The PCR process is covered by patents issued and applicable in certain countries. Bioingentech Biotechnology Inc. does not encourage or support the unauthorized or unlicensed use of the PCR process. Use of this product is recommended for persons that either have a license to perform PCR or are not required to obtain a license.

8. TROUBLE SHOOTING

- 1.- In the case of difficult to interpret results due to non-specific bands; reduce amount of template by 1/10 dilution, heated at 65° C for 5 min. and reacts again.
- 2.- Preparation of PCR reaction at room temperature may cause the non-specific band.
- 3.- All procedure should be carried out on ice.

9. ORDERING INFORMATION

Product	Catalog No.
VetPCR™ CHLA.spp Detection Kit 48	VET0011C(48)
VetPCR™ CHLA.spp Detection Kit 96	VET0011C(96)
Brig™ Molecular Weight Marker	24012



Bioingentech Ltd.
 Salas 350, piso 2, Concepción, Chile
 Telephone (56)-(41)-2790435
 Fax (56)-(41)-2790435
 info@bioingentech.com
 www.bioingentech.com

Product use limitations warranty disclaimer

Bioingentech manufactures product for a number of intended uses. Please refer to the product label for the intended use statements for specific product. Bioingentech products contain chemicals which may be harmful if misused. Due care should be exercised with all Bioingentech products to prevent direct human contact. Each Bioingentech product is shipped with documentation stating specifications and other technical information. Bioingentech products are warranted to meet or exceed the stated specifications. Bioingentech's sole obligation and the customer's sole remedy is limited to replacement of products free of charge in the event products fail to perform as warranted. Bioingentech make no other warranty of any whatsoever, and SPECIFICALLY DISCLAIMS AND EXCLUDES ALL OTHER WARRANTIES OF ANY KIND OR NATURE WHATSOEVER, INCLUDING, WITHOUT LIMITATION, AS TO THE SUITABILITY, PRODUCTIVITY, DURABILITY, FITNESS FOR A PARTICULAR PURPOSE OR USE, MERCHANTABILITY, CONDITION, OR ANY OTHER MATTE WITH RESPECT TO BIOINGENTECH PRODUCTS. In no event shall Bioingentech be liable for claims for any other damages, whether direct, incidental, foreseeable, consequential, or special (including but not limited to loss of use, revenue or profit), whether based upon warranty, contract, tort (including negligence) or strict liability arising in connection with the sale or the failure of Bioingentech products to perform in accordance with the stated specifications.

2004 – 2009 Bioingentech corporation. All rights reserved.

Products may be covered by pending or issued patents or may have certain limitations. Please visit our web site for more information.

All prices and specifications are subject to change without prior notice

Product claims are subject to change. Please contact Bioingentech technical services or access the Bioingentech online catalog for the most up-to-date information on Bioingentech products.